

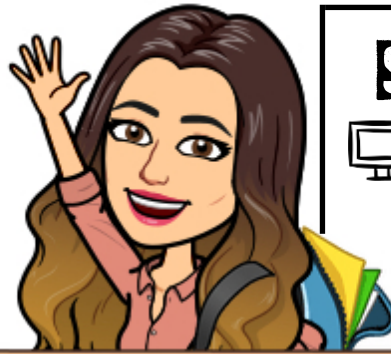


CONTACT ME

 veronica.mondragon@leusd.k12.ca.us

 951-244-2123 ext 3306


 33005 Canyon Hills Rd,
Lake Elsinore, CA 92532
Room C106



STAY CONNECTED!

 www.mrsmondragon.weebly.com

 [facebook.com/
mrsveronicamondragon](https://facebook.com/mrsveronicamondragon)

 @MondragonCLMS

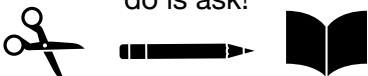
MATERIALS

- ONE 2-3 inch binder to hold work from ALL classes
- College ruled paper
- Glue sticks
- Blue or black pens
- Multiple pencils
- 1 red pen
- Highlighters
- Scissors
- Spiral notebook for LA
- 1 file folder
- Crayons/markers/color pencils
- Dividers for all subjects
- Clear sheet protectors
- Expo marker (optional)
- Collections Textbook AND Close Reader for Language Arts
- My World Textbook AND Interactive Journal for Social Studies
- DLR Packet for daily warm ups



No supplies at home?

Supplies required to complete any assignment will always be available to take home! All you have to do is ask!



MRS. MONDRAGON 6th Grade LANGUAGE ARTS & SOCIAL STUDIES 2019-2020

"Educating the mind without educating the heart, is no education at all." -Aristotle

CLASSROOM BE NORMS



1. BE prepared with all materials.
2. BE respectful to ALL.
3. BE on task!
4. BE attentive. Listen and ask questions.
5. BE your personal best! Give 100% effort, 100% of the time! PB Style always!
6. BE positive and supportive of peers!
7. BE a contributor!
8. BE yourself! You are an important part of this class, so feel free to be YOU!

BE a student with CHARACTER THAT COUNTS!
(trustworthy, respectful, responsible, fair, caring, and an outstanding citizen)

REWARDS

I love to reward my students with lots of praise, fun, and treats! We work hard to play harder in Mondragon's class!

CONSEQUENCES

Students who fail to adhere to class norms will only jeopardize their own grades. Each week students earn 20 points for proper behavior. If a student does not follow norms, student will lose points. Playing with objects NOT related to instruction will be taken away without warning. If student wants item back, parent/guardian must pick it up, otherwise student will earn it back on the last day of school.

Extreme and consistent behavioral issues will merit immediate counselor/administration intervention.

TECHNOLOGY

I encourage you to download or add to your favorites the following apps/sites that we will be using frequently this year.

Also, please get organized and have a place to store all your passwords! More info on tech and organization to come!



Google Apps! I highly recommend parents create a family gmail account for student use!



vocabulary.com

Dictionary.com

ParentSquare

Clever



POLICIES AND PROCEDURES

ROUTINES

1. First 10 minutes are for **students to get prepared**. They greet me, communicate any concerns/issues, check in status on the Levels of Engagement Chart, take out homework, get materials ready to go (i.e. sharpen pencils, throw away trash, etc), use the restroom, and obtain materials.
2. Next 5 minutes are reserved for the daily **Settle In Activity** (breathing awareness, mindful movement, self awareness, social awareness, relationship skills, etc) We are setting the intentions and getting our whole body and mind ready to be open and receive new knowledge.
3. 35-40 minutes reserved for each LA and SS lesson. No sharpening pencils or getting materials at this time.
4. Last 5 minutes together is reserved for Close Out activity.

Great app! I highly recommend to practice meditation and mindfulness



STOP, BREATHE & THINK

MAKE UP WORK POLICY

Students are responsible for missed work when they are absent. They have 7 consecutive days once they return to school to obtain missed work, complete and turn in. Students can find missed work by checking the absent folders on the wall, asking me for clarification or asking reliable peers for support. Make up tests must be completed within one week once student returns from an absence and will NOT be given thereafter. It is SOLELY the student's responsibility to communicate and arrange a makeup date with the teacher. *For extreme or unique cases, such as student is out of the class for several days, student MUST see me within the first 7 days he/she returns so I can modify missed work and plan a reasonable time frame for the student to do missed work.

GRADES -WEIGHTS AND CATEGORIES

Assessments- 50% of overall grade

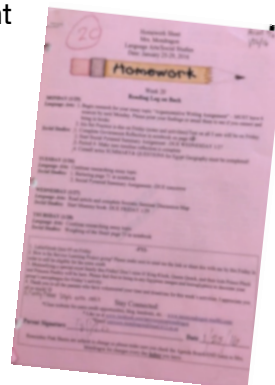
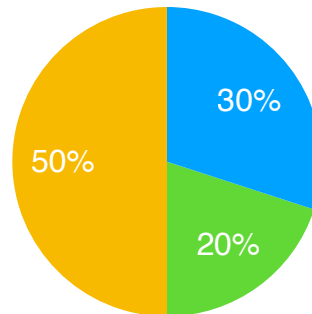
Because each student learns differently, I assess students using a variety of modes. Some types of assessments will include summative projects, pop quizzes, take home tests, presentations, multiple choice tests, essays, fill in the blanks, and matching. It is extremely important that students study at home, manage their time effectively and do all homework and classwork to be successful on assessments.

Classwork-30% of overall grade

This includes daily warm up activities, participation/behavior and attendance, and working on projects/assignments in class. Attendance is crucial!

Homework- 20% of overall grade

Students will receive a Pink Sheet every Monday. This sheet will inform students and parents on topics discussed in class for the week, HW assignments, and tentative due dates, upcoming events and reminders. On the back is a reading log. Students are to submit Pink Sheets every Friday with parent signature. The reading logs are worth 20 points each week. Homework will serve as an extension of what was taught in class. If student does not understand the homework, I do NOT expect my students to sit at the dinner table for hours working on homework. The student is to do as much as they understand. Have student write down question/point of confusion, and then articulate their concerns with me before class. I am very flexible with due dates. I am interested more in your child learning rather than simply finishing assignments. Make sure to log onto Jupiter Grades to view grades, read my comments on assignments and monitor overall progress.



LATE WORK POLICY

Students will be given ONLY 6 late work (ICE) passes for the year! Work that is not turned in on the due date is considered late and will not be accepted without a late work (ICE) pass. The pass MUST be filled out completely with parent's signature in order to be accepted.

REMINDER: If students do not understand homework and articulate their point of confusion before class starts, extensions will most likely be granted. (Each individual's situation is unique so student and I will determine best solution to meet his/her needs to access the curriculum.)

POLICIES AND PROCEDURES

EXTRA CREDIT POLICY

Extra credit opportunities are available on my class website. Students may complete specific assignments online at my website worth 5 points per activity. Students may only do each activity once. Students must earn 100% on activities, print, and place in the "Extra Credit" Folder. See me for details. Also, listen in class for when I make announcements about more opportunities.

JUPITER GRADES & INFINITE CAMPUS

Grades will be available online at www.jupitergrades.com. Please login with the information I have provided you in order to access your child's assignments and grades. For **further** information on your child, such as absences, records, etc. you can visit Lake Elsinore Unified School District Web Page at www.leusd.k12.ca.us, click on Infinite Campus/Parental Portal. If you have any trouble accessing your child's information, please email icreset@leusd.k12.ca.us.

PARENT & TEACHER COMMUNICATION MODES

I offer many modes of communication! Some serve specific purposes such as Jupiter for grades, email for personal questions and concerns. However, my website, Parent Square, Pink Sheets, and Green Sheets will provide insight on events, due dates, links, and more! Do not feel obligated to use them all. They are simply there to keep you in the loop. Middle school is NOT the time to take a step back. Your involvement is crucial for your child's success!

1. **Class website:** www.mrsmondragon.weebly.com
2. **Jupiter Grades:** www.jupitergrades.com
3. **Email:** veronica.mondragon@leusd.k12.ca.us
4. **Facebook:** www.facebook.com/mrsveronicamondragon
5. **Green Sheets**
6. **Pink Sheets**
7. **Parent Square** <https://parentsquare.com/>

GREEN SHEETS

Despite the advances in technology, I still firmly believe in the "old school" paper method too! Therefore, I will still pass out a progress report every Friday to your child. These progress reports will be better known as GREEN SHEETS. Please sign them every Friday and have your child return every Monday even if you already know your child's grades because you are viewing them on Jupiter Grades. Green sheets are collected and worth 2 points every week. They will be kept in your child's files. Please feel free to write any concerns, questions, or comments on green sheets and I will contact you with a response immediately. If you are not receiving green sheets from your child, please be proactive and contact me. I assure you, I will always send home green sheets unless there is an emergency or I am absent in which I will notify you via email, text, or on my website.



Welcome to Middle School in the 21st Century!

For more information & tips to help your child transition successfully into middle school, please click on the tab "Mrs. Mondragon's Blog" at my website and visit the following helpful blog posts titled: "Top 5 Tips for Parents to Survive Middle School" or "Projects? What's that all about?" Also, visit the Resources Page to learn more about how to support your child in middle school! You don't want to miss out on "Steps to Success at Canyon Lake Middle School" on the next page!



SURVEYS



Please don't forget to complete the survey at www.mrsmondragon.weebly.com. Click on the tab, "Classroom Info" and take the Parent Survey! Students will earn points after you and your child read this syllabus and complete surveys. Please keep this syllabus in a secure place, easily accessible to consult when questions arise.



Steps to Success at CLMS

After many years of experience and expertise, we, the 6th grade team, decided it would be highly effective to put together a checklist that you could follow before scheduling a conference with your child's teacher(s). There are common frustrations, concerns, and problems that emerge in the 6th grade that could be easily remedied with some guidance, so we hope you find this checklist useful. Please go ahead and post it on the refrigerator or somewhere visible for your entire family. We look forward to working with you and your student.

- Did you have an honest, non-confrontational discussion about what is going on in school/classes? People tend to become defensive when they are being accused. Children are no different, so it would be more effective to enter into a dialogue with your child when you are not upset or reviewing grades.
- Have you checked Jupiter Grades? www.jupitergrades.com This is your bridge to connect with assignments, grades, and messages from the teacher. Review teacher's comments on assignments, impact bar, and assignments uploaded.
- Have you reviewed your child's Agenda? Homework Sheet? Binder Reminder?
- Have you asked your child to show you his/her notebook for examples, directions, and student work?
- Did you ask your child to articulate their point of confusion and write it out? Accepting a vague response, such as "I don't get it" is not helpful to student nor the teacher. Please help them explain what they are struggling with and put it in writing.
- Did you have your child speak with his/her teacher about the point of confusion?
- When a discrepancy occurs, did your child print out the Jupiter Grades report, and schedule an appointment to discuss the problem with the teacher at teacher's convenience? Appropriate times would be before/after school and during break/lunch. If all measures were taken, and there are still discrepancies and concerns, please email the teacher to either voice your concerns or schedule a conference. When conferences are arranged, please be mindful of the time set for the meeting. We ask that you keep the meetings at a maximum 30 minutes. It would be helpful to bring all assignments, questions, point of confusion, and any other documents that would aid the teacher to diagnose the problem and provide suggestions for improvement. Thank you so much!

We look forward to partnering with you this year!
*The CLMS 6th grade Language Arts/Social Studies Department and
6th grade Math/Science Department*